

**Name of Work: 2018-19 Construction of Mini Material Recovery Collection Centre at Various Places.**

**TYPE - I (Size 2.50 x 1.60 mts.)**

- 1) 10.16.1 Steel work in built up tubular (round, square or rectangular hollow tubes etc.) trusses etc., including cutting, hoisting, fixing in position and applying a priming coat of approved steel primer, including welding and bolted with special shaped washers etc. complete. Hot finished welded type tubes.

- a) 50 x 25x2.60<sup>mm</sup>  
Rectangular Hollow section for supporting post of roof.

For post	4	x	2.10	=	8.40	
Tie beam (Length wise)	3	x	2.50	=	7.50	
Tie beam (Width wise)	2	x	1.60	=	3.20	
					<u>19.10 m</u>	x 2.71kg/m = 51.761 kg

- b) 25x25x2.60<sup>mm</sup> Square  
Hollow section for common rafters.

Two side rafters	2x4	x	1.00	=	8.00 m x 1.69 kg/m	= 13.52 kg
					Total	= <u>65.281 kg</u>

**Say 65.50 kg**

**Rs. 130.07 / kg = 8519.59**

- 2) 10.25.2 Item shifted to head 14 as item 14.74 steel work welded in built up sections of framed work, including cutting, hoisting, fixing in position and applying a priming coat of approved steel primer using structural steel etc. as required in graining, frames, guard bar, ladder, railing brackets, gates and similar works.

- a) 30 x 20 x 3mm angel iron frame and 5mm dia MS rods vertical and horizontal nets at 10cm c/c for compartment

Bottom row compartment 2 x 3 = 6 Nos.  
 No. of mesh pieces 6 x 6 = 36 Nos.  
 Top row compartment 2 x 3 = 6 Nos.  
 No. of mesh pieces 6 x 5 = 30 Nos.  
 1 pieces weight of mesh = 6.023 kg.  
 Hence 66 Nos. (36 + 30) 66 x 6.023 = 397.518  
 pieces of weight

**Say 400.00 kg**

**Rs. 123.87/ kg = 49548.00**

3) 12.50 Providing and fixing precoated galvanised iron profile sheets (size, shape and pitch of corrugation as approved by Engineer-in-charge) 0.50 mm (+ 0.05 %), total coated thickness with zinc coating 120grams per sqm as per IS: 277, in 240 mpa steel grade, 5-7 microns epoxy primer on both side of the sheet and polyester top coat 15-18 microns. Sheet should have protective guard film of 25 microns minimum to avoid scratches during transportation and should be supplied in single length upto 12metre or as desired by Engineer-in-charge. The sheet shall be fixed using self drilling /self tapping

Roof 2 x 3.40 x 1.45 = 9.86

**Say 10.00 m<sup>2</sup>**

**Rs. 793.24/m<sup>2</sup>**

**= Rs. 7932.40**

4) Providing lock and locking arrangements with name board.

**LS = Rs. 2500.00**

**Total = Rs. 68499.99**

**Unforeseen = Rs. 500.01**

**Grand Total = Rs. 69000.00**

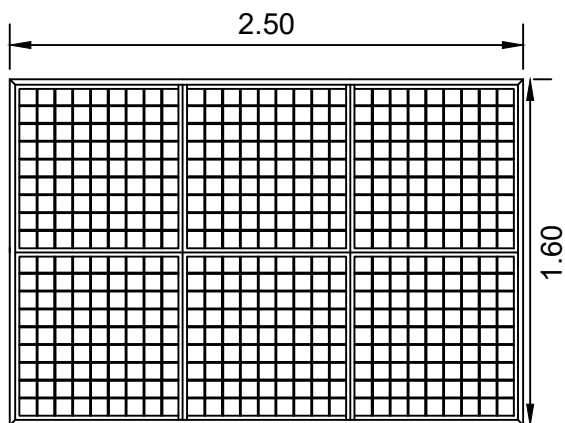
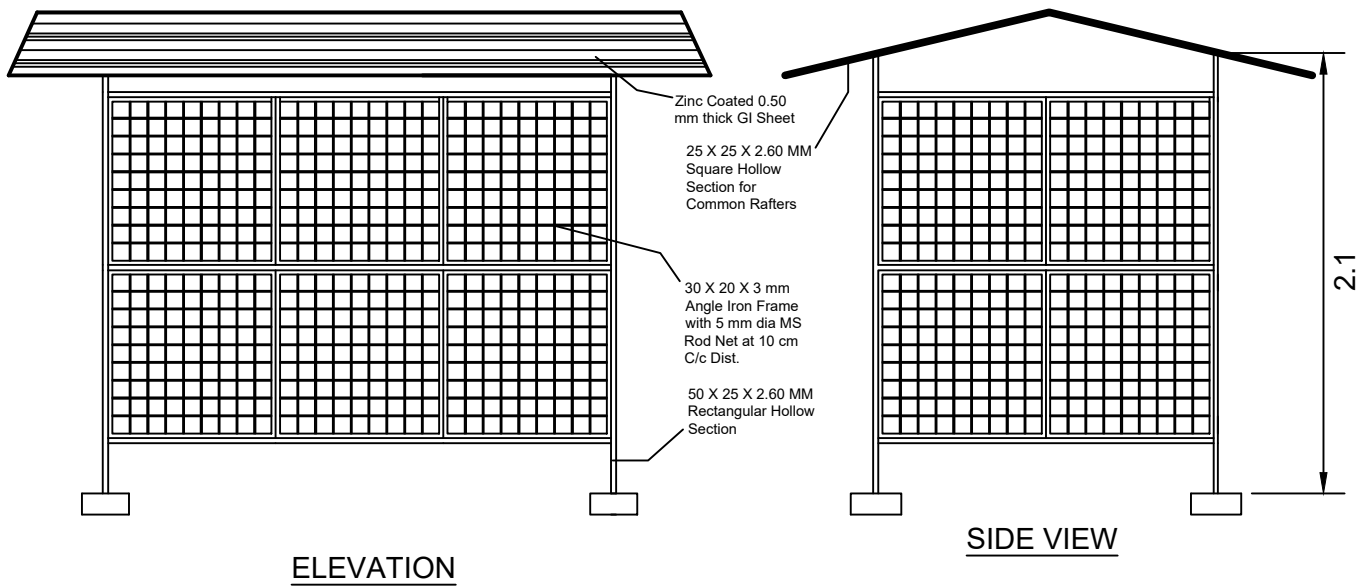
**=====**

|

\_\_\_\_\_

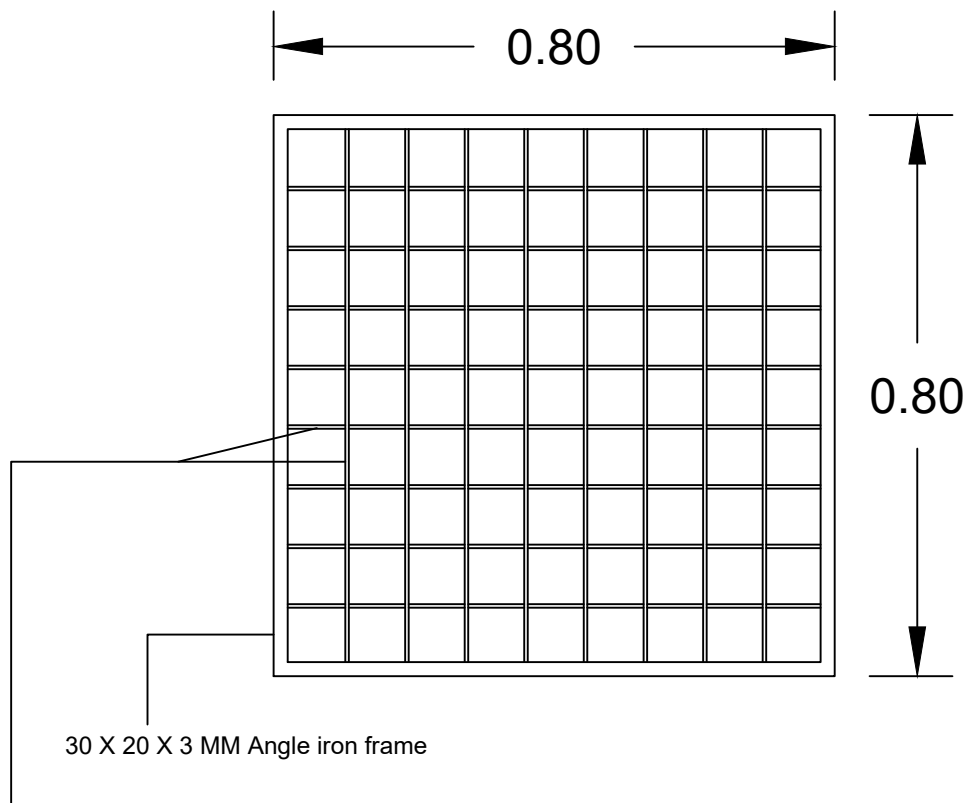
Name of work - 2018-19 Construction of a Mini Material Collection Center at various places

Type No. I (Size 2.50 X 1.60 M)



PLAN

# Details of one piece of mesh



5 MM Dia M.S. rods for net @ .085 M c/c

Data for 1 piece of mesh in size 0.80 X 0.80 M	
(a)	30 X 20 X 3 MM Angle iron frame :-
	Vertical Frame -2 X 0.80 = 1.60
	Horizontal Frame -2 X 0.80 = <u>1.60</u>
	3.20 M X 1.10 Kg/M = 3.52 Kg
(b)	5 MM Dia M.S. rods Vertical and Horizontal net :-
	Vertical - 9 X 0.80 = 7.20
	Horizontal - 9 X 0.80 = <u>7.20</u>
	14.40 M X 0.154 Kg/M = <u>2.217</u> Kg
	5.737
	add 5 % wastage <u>0.286</u>
	<b><u>6.023</u> Kg</b>