

Name of Work: 2018-19 Construction of Mini Material Recovery Collection Centre at Various Places.

TYPE - VII (Size 2.50 x 1.60 M)

1) 10.16.1 Steel work in built up tubular (round, square or rectangular hollow tubes etc.) trusses etc., including cutting, hoisting, fixing in position and applying a priming coat of approved steel primer, including welding and bolted with special shaped washers etc. complete. Hot finished welded type tubes.

a) 50 x 25x2.60^{mm}
Rectangular Hollow section for supporting post of roof.

For post	4	x	2.10	=	8.40
Tie beam (Length wise)	2	x	2.50	=	5.00
Tie beam (Width wise)	4	x	1.60	=	6.40
Additional Central Portion	4	x	2.75	=	11.00

$$\frac{30.80 \text{ m}}{1} \times 2.71 \text{ kg/m} = 83.466 \text{ kg}$$

b) 25x25x2.60^{mm} Square
Hollow section for common rafters.

	2x4	x	1.00	=	8.00 m
	2x4	x	0.55	=	4.40 m
				=	<u>12.40 m</u> x 1.69 kg/m = <u>20.956 kg</u>
					= 104.92

Say 105.00kg

$$\text{Rs. } 130.07 / \text{kg} = \text{Rs. } 13657.35$$

2) 10.25.2 Item shifted to head 14 as item 14.74 steel work welded in built up sections of framed work, including cutting, hoisting, fixing in position and applying a priming coat of approved steel primer using structural steel etc. as required in grainting, frames, guard bar, ladder, railing brackets, gates and similar works.

a) 30 x 20 x 3^{mm} angel iron frame and 5^{mm} dia MS rods vertical and horizontal nets at 10cm c/c for compartment

Bottom row compartment	1	x	4	=	4 Nos.
No. of mesh pieces	4	x	6	=	24 Nos.
Top row compartment	1	x	4	=	4 Nos.
No. of mesh pieces	4	x	5	=	20 Nos.
Additional (Bottom + top)	1	x	2	=	2 Nos.
1 pieces weight of mesh				=	6.023
Hence 46 Nos. (24 +20 + 2) pieces of weight	46	x	6.023	=	277.05

Say 277.00 kg

Rs. 123.87/ kg

= Rs. 34090.39

3) 12.50 Providing and fixing precoated galvanised iron profile sheets (size, shape and pitch of corrugation as approved by Engineer-in-charge) 0.50 mm (+ 0.05 %), total coated thickness with zinc coating 120grams per sqm as per IS: 277, in 240 mpa steel grade, 5-7 microns epoxy primer on both side of the sheet and polyester top coat 15-18 microns. Sheet should have protective guard film of 25 microns minimum to avoid scratches during transportation and should be supplied in single length upto 12metre or as desired by Engineer-in-charge. The sheet shall be fixed using self drilling /self tapping

Roof 2 x 3.45 x 0.38 = 6.072

Sky light roof 2 x 3.45 x 0.80 = 5.52

11.592 m²

Say 12.00 m²

Rs. 793.24/m²

= Rs. 9518.88

4) Providing lock and locking arrangement with name board.

LS = Rs. 2500.00

Total = Rs. 59766.62

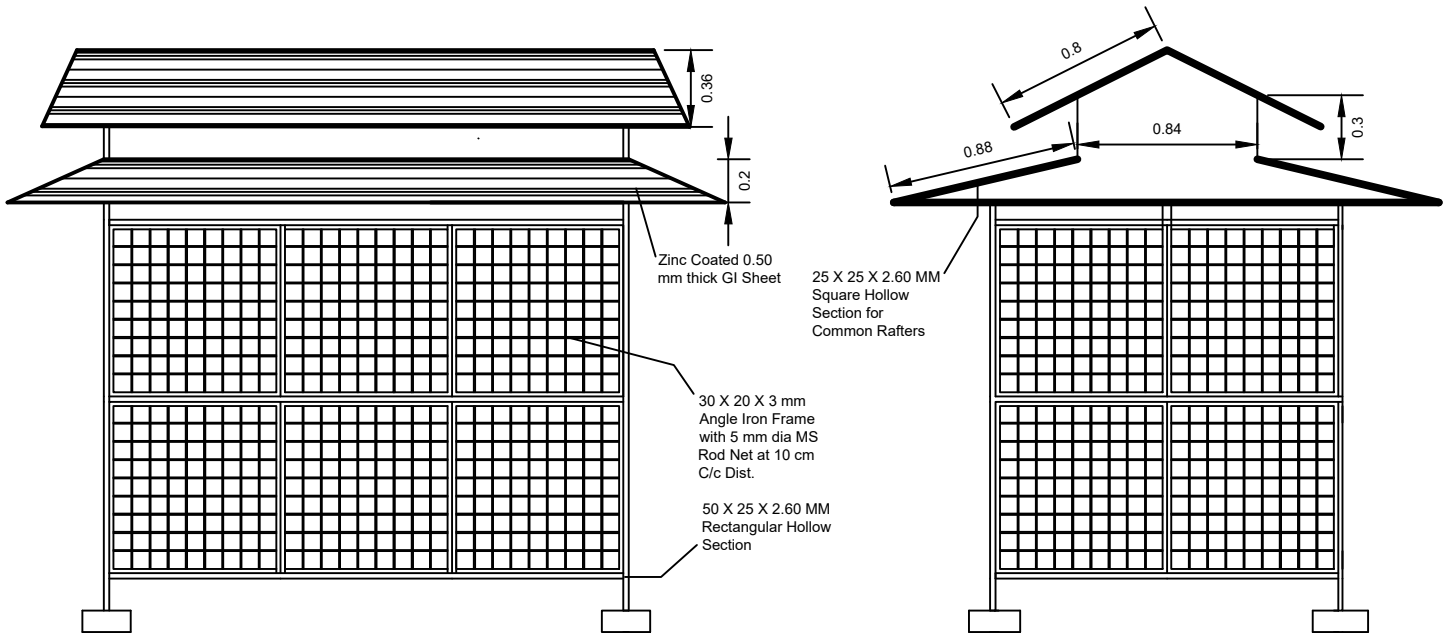
Unforeseen = Rs. 233.38

Grand Total = Rs. 60000.00
=====

_____ |

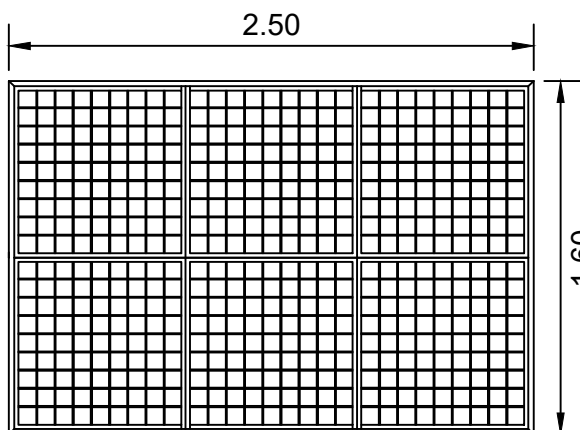
Name of work - 2018-19 Construction of a Mini Material Collection Center at various places

Type No. VII (Size 2.50 X 1.60 M)



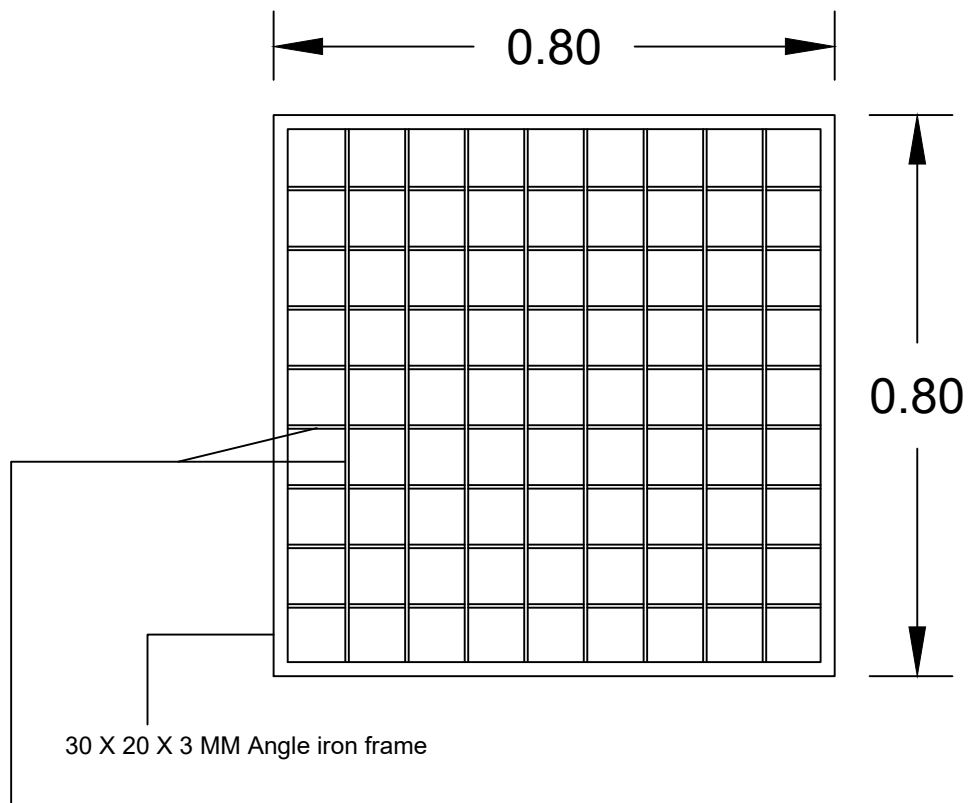
ELEVATION

SIDE VIEW



PLAN

Details of one piece of mesh



5 MM Dia M.S. rods for net @ .085 M c/c

Data for 1 piece of mesh in size 0.80 X 0.80 M	
(a)	30 X 20 X 3 MM Angle iron frame :-
	Vertical Frame -2 X 0.80 = 1.60
	Horizontal Frame -2 X 0.80 = <u>1.60</u>
	3.20 M X 1.10 Kg/M = 3.52 Kg
(b)	5 MM Dia M.S. rods Vertical and Horizontal net :-
	Vertical - 9 X 0.80 = 7.20
	Horizontal - 9 X 0.80 = <u>7.20</u>
	14.40 M X 0.154 Kg/M = <u>2.217</u> Kg
	5.737
	add 5 % wastage <u>0.286</u>
	<u>6.023</u> Kg