

Name of Work: 2018-19 Construction of Mini Material Recovery Collection Centre at Various Places.

TYPE - VIII (Size 1.60 x 0.80 M)

1) 10.16.1 Steel work in built up tubular (round, square or rectangular hollow tubes etc.) trusses etc., including cutting, hoisting, fixing in position and applying a priming coat of approved steel primer, including welding and bolted with special shaped washers etc. complete. Hot finished welded type tubes.

a) 50 x 25x2.60^{mm}
Rectangular Hollow section for supporting post of roof.

For post (Front)	2	x	2.10	=	4.20	
For post (Back)	2	x	1.80	=	3.60	
Tie beam (Length wise)	2	x	1.60	=	3.20	
Tie beam (Width wise)	2	x	0.80	=	1.60	
					<u>9.40 m</u>	x 2.71kg/m = 25.474 kg

b) 25x25x2.60^{mm} Square
Hollow section for common rafters.

	3	x	1.30	=	3.90	
	3	x	0.60	=	1.80	
					<u>5.70 m</u>	x 1.69 kg/m = <u>9.633 kg</u> = 35.107 kg

Say 35.50 kg

Rs. 130.07 / kg = Rs. 4671.49

2) 10.25.2 Item shifted to head 14 as item 14.74 steel work welded in built up sections of framed work, including cutting, hoisting, fixing in position and applying a priming coat of approved steel primer using structural steel etc. as required in graining, frames, guard bar, ladder, railing brackets, gates and similar works.

a) 30 x 20 x 3^{mm} angel iron frame and 5^{mm} dia MS rods vertical and horizontal nets at 10cm c/c for compartment

Bottom row compartment	1	x	1	=	1 No.
No. of mesh pieces	2	x	5	=	10 Nos.
Top row compartment	1	x	1	=	1 No.
No. of mesh pieces	2	x	4	=	8 Nos.
1 pieces weight of mesh				=	6.023 kg.
Hence 18 Nos. (10 +8) pieces of weight	18	x	6.023	=	108.414

Say 110.00 kg

Rs. 123.87/ kg = Rs. 13625.7

3) 12.50 Providing and fixing precoated galvanised iron profile sheets (size, shape and pitch of corrugation as approved by Engineer-in-charge) 0.50 mm (+ 0.05 %), total coated thickness with zinc coating 120grams per sqm as per IS: 277, in 240 mpa steel grade, 5-7 microns epoxy primer on both side of the sheet and polyester top coat 15-18 microns. Sheet should have protective guard film of 25 microns minimum to avoid scratches during transportation and should be supplied in single length upto 12metre or as desired by Engineer-in-charge. The sheet shall be fixed using self drilling /self tapping

Roof	1	x	2.50	x	1.42	=	3.55
	1	x	2.50	x	0.65	=	<u>1.61</u>
							5.18

Say 5.20 m²

Rs. 793.24/m²

= Rs. 4124.85

4) Providing lock and locking arrangement with name board.

LS = Rs. 2500.00

Total

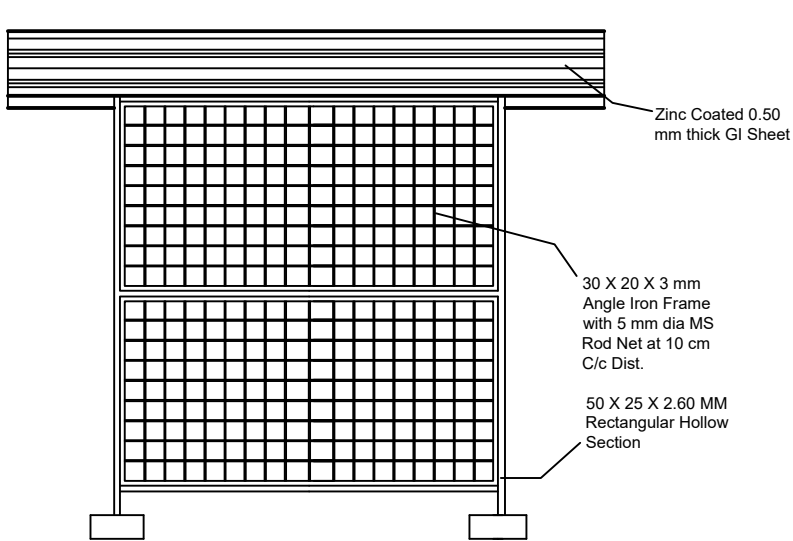
= Rs. 24868.04

Unforeseen	=	<u>Rs. 131.96</u>
Grand Total	=	Rs. 25000.00
		=====

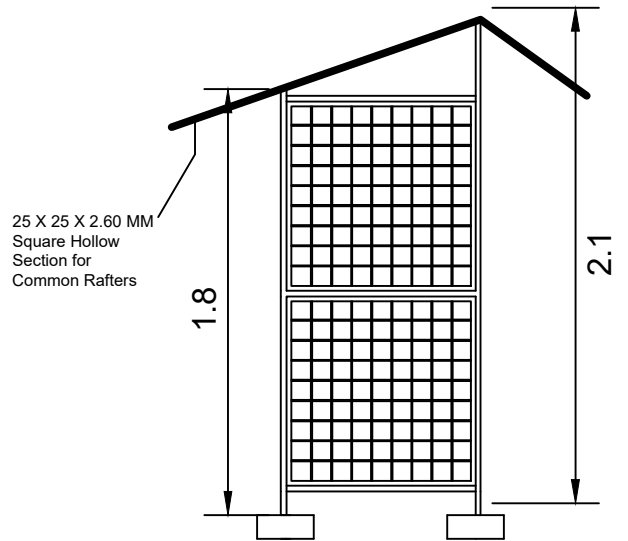
|

Name of work - 2018-19 Construction of a Mini Material Collection Center at various places

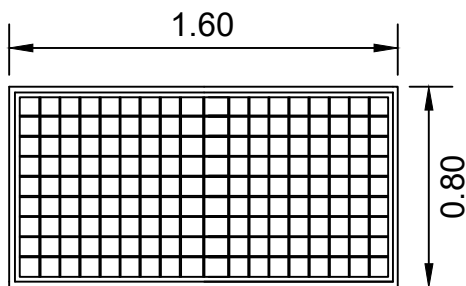
Type No. VIII (Size 1.60 X 0.80 M)



ELEVATION

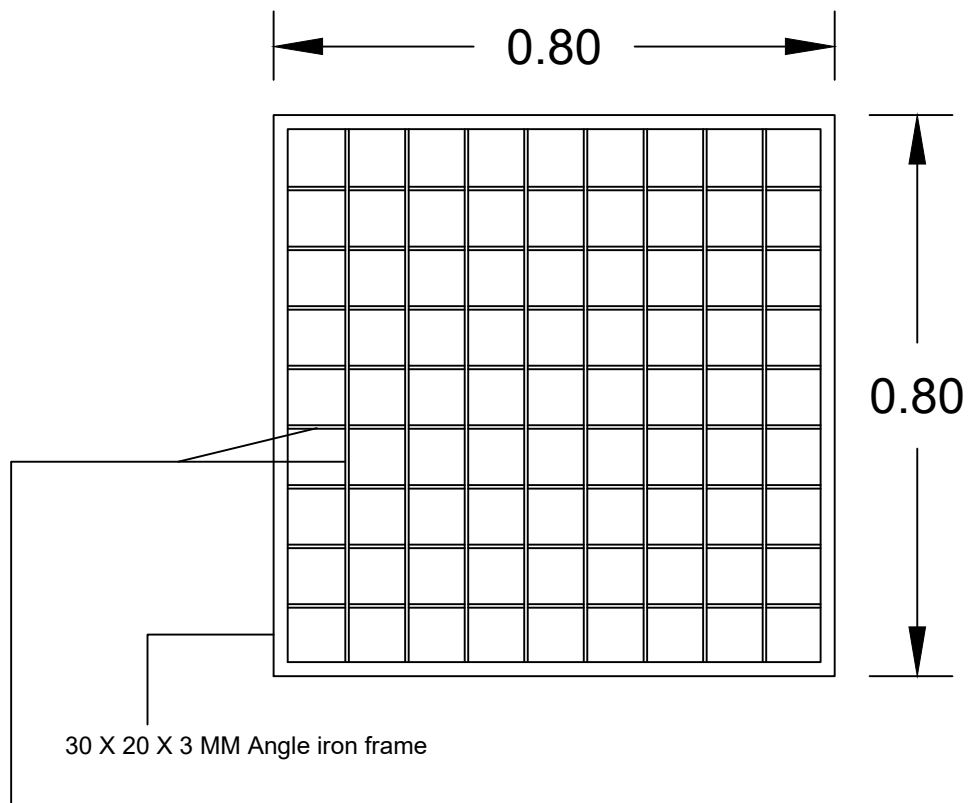


SIDE VIEW



PLAN

Details of one piece of mesh



5 MM Dia M.S. rods for net @ .085 M c/c

Data for 1 piece of mesh in size 0.80 X 0.80 M	
(a)	30 X 20 X 3 MM Angle iron frame :-
	Vertical Frame -2 X 0.80 = 1.60
	Horizontal Frame -2 X 0.80 = <u>1.60</u>
	3.20 M X 1.10 Kg/M = 3.52 Kg
(b)	5 MM Dia M.S. rods Vertical and Horizontal net :-
	Vertical - 9 X 0.80 = 7.20
	Horizontal - 9 X 0.80 = <u>7.20</u>
	14.40 M X 0.154 Kg/M = <u>2.217</u> Kg
	5.737
	add 5 % wastage <u>0.286</u>
	<u>6.023</u> Kg